



THIS BULLETIN DOES NOT CHANGE AIRCRAFT TYPE DESIGN

SUBJECT: Mooney Aircraft With Smooth Skin Elevators and Balance Weight Inspection
[Chapter 27 - FLIGHT CONTROLS]

MODELS/ SN AFFECTED: All Mooney Models with smooth skin (non-beaded) elevators

TIME OF COMPLIANCE: **Before Next Flight and in accordance with NOTE 1 and NOTE 2 below.**

INTRODUCTION: There are specific aircraft with smooth skin elevators, that utilized a hybrid material elevator balance weight. These weights (P/N 430018-1) are identified by the center plug running through the full width of the balance weight. During routine maintenance at an Authorized Mooney Service Center, the elevator balance weights were found to have developed galvanic corrosion, visible signs of the weight is cracked and displaced severely. There have been 6 separate instances of this anomaly in only the M20F model aircraft using this hybrid balance weight. Mooney has heard many occasions where used flight controls (from salvage yards) are used on other Mooney models: (ie: M20B, M20C, M20D, M20E, M20G). Engineering has determined that this will require an inspection and corrective action taken. **The attached compliance card needs to be filled out and returned to Mooney International Corporation upon completion of this Service Bulletin M20-345..**

INSTRUCTIONS: **Read entire procedures before beginning work.**

- 1.1. If cracks occur, they will most likely be the outer material surrounding center plug, refer to **Figure SBM20-345-1 and SBM20-345-2.**
- 1.2. Inspect all areas of the elevator balance weight for any abnormalities, refer to **Figure SBM20-345-2.** If required, remove paint from the area to be inspected.

NOTE 1:

If during visual inspection it is determined that both elevator balance weights are not the Hybrid 430018-1 balance weight, no further inspections are required.

- 1.3. If the balance weight is found to be "abnormal" - DO NOT FLY - Please contact Mooney Technical Support at email technicalsupport@mooney.com for further instructions.

NOTE 2:

If elevator balance weights are the original 430018-1 style, DO NOT FLY, the balance weights will need to be replaced with new weights developed by Mooney in a later revision of this Service Bulletin.

WARRANTY: Labor and/or replacement parts (if required) will not be covered under Mooney International Corporation warranty policy for affected aircraft that are beyond warranty agreement.

REFERENCE DATA: 1. Applicable Mooney Illustrated Parts Catalog and Service and Maintenance Manual

PARTS LIST: Mooney International Corporation, Service Bulletin Parts Kit(s): N/A at this time



THIS BULLETIN DOES NOT CHANGE AIRCRAFT TYPE DESIGN

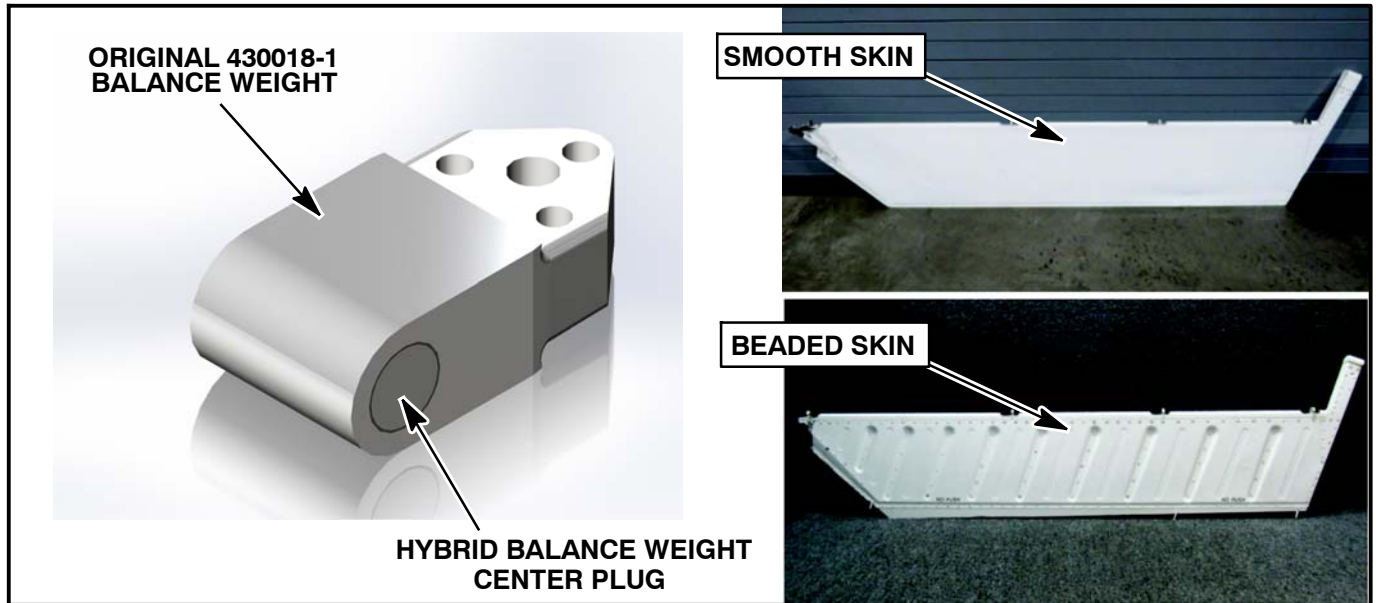


Figure SBM20-345-1 - SMOOTH SKIN ELEVATOR AND BALANCE WEIGHT IDENTIFICATION

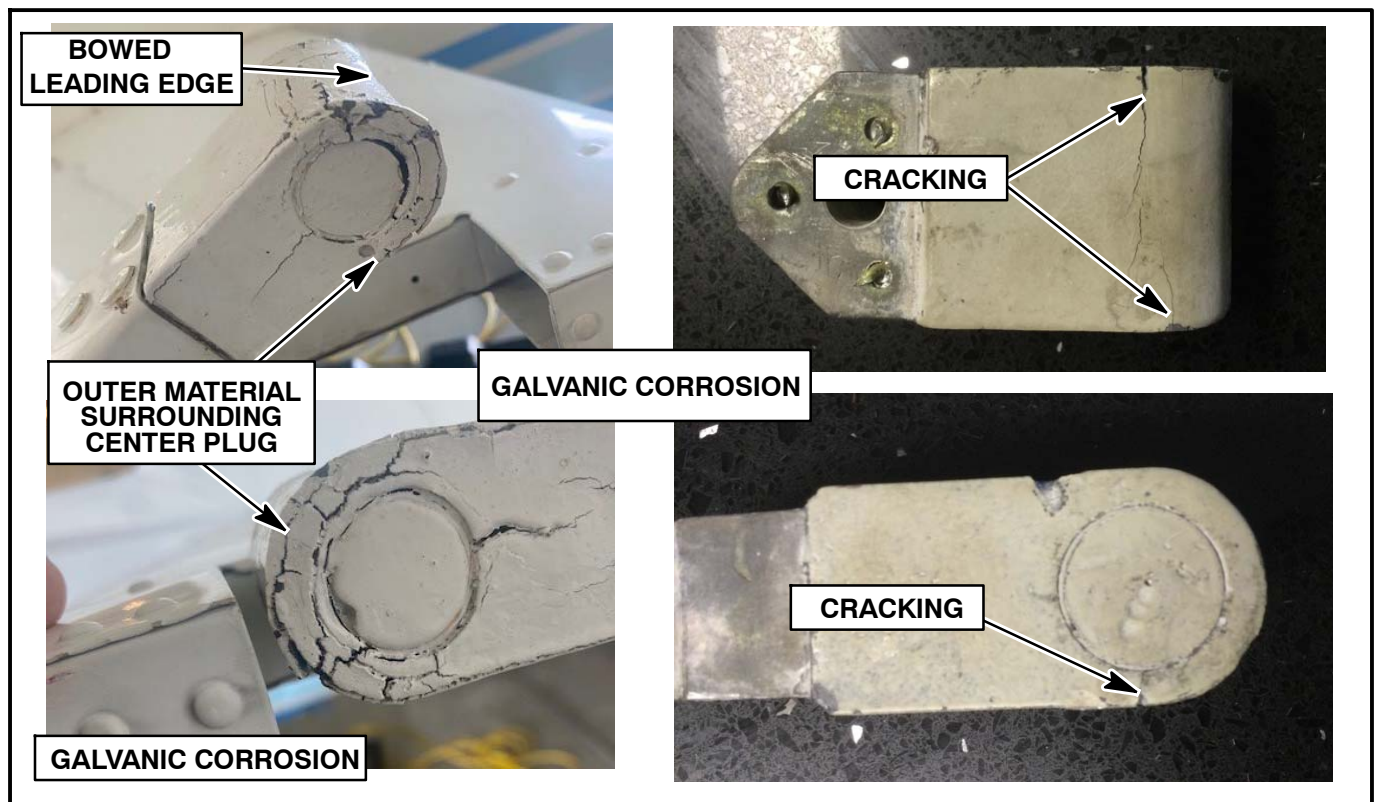


Figure SBM20-345-2 - ABNORMALITIES - SEVERE GALVANIC CORROSION AND CRACKING OF THE ORIGINAL 430018-1 BALANCE WEIGHT



THIS BULLETIN DOES NOT CHANGE AIRCRAFT TYPE DESIGN

MOONEY INTERNATIONAL CORPORATION
KERRVILLE, TEXAS 78028 - FAX 830-257-4635

SERVICE (BULLETIN) (INSTRUCTION) NO. _____ HAS BEEN COMPLIED
WITH ON AIRCRAFT MODEL _____ SERIAL NUMBER _____

Tach. Time: _____ N-Number _____ (Reg. No.)
Owner: _____ Date of Compliance: _____
_____ Complied By: _____

Inspection Report: _____

Form 07-0001

PLACE STAMP HERE

MOONEY INTERNATIONAL CORPORATION
ATT'N: TECHNICAL SUPPORT
165 Al Mooney Road North
Kerrville, Texas 78028

SEND TO: Mooney International Corporation
165 Al Mooney Road North
Kerrville, TX 78028
FAX: (830) 257-4635 or EMAIL support@mooney.com

Figure SB M20-345-3 - Compliance Card