



(This Service Letter Is FAA Approved)

This Service Letter reidentified as
Service Bulletin M 20-92
per Service Instruction M20-15.

SUBJECT: Insulation of Master Switch, Revision to Carburetor Heat Tube,
and Replacement of Vacuum Lights

MODEL AFFECTED: M20C, Serial Numbers as Noted Below

TIME OF COMPLIANCE: Optional

INTRODUCTION:

1. Insulation of Master Switch — (for Serials 1852, 1940, 1941, 1943, and 1945). The installation of the master switch, Part No. AN3027-2, has been revised to add Part No. 8728-1 insulator box, effective Serial No. 1946 and on, for production. We recommend that this revision be incorporated on the five airplanes listed above.
2. Revision to Carburetor Heat Tube — (for Serials 1852, 1940 through 1959). The carburetor heat tube, Part No. 6484-5, leading from the muffler to the carburetor air box has been redesigned to eliminate the possibility of burning a hole in this part through contact with the muffler. Part No. 6504-1 elbow has been added, effective Serial No. 1960 and on, for production. We recommend that this revision be incorporated on the twenty-one airplanes listed above.
3. Replacement of Vacuum Lights — (for Serials 1940 through 1988). Aircraft subsequent to Serial No. 1988 are equipped with dimming type lights for the high and low vacuum indicators on the artificial horizon. Some of the aircraft prior to Serial No. 1988 may have the turn-to-dim type lights; however, if they are not installed, we recommend that the lights be replaced with Part No. 8734-3 dimmer type lights to reduce the glare encountered in night flying.

PARTS LIST AND INSTRUCTIONS:

Kit No. 1

Part No. 8728-1 Insulator Box (1)

Install Part No. 8728-1 insulator box as shown in Figure 1.

Kit No. 2

Part No. 6504-1 Elbow (1)

QS-100M-36 Clamp (1)

#6 x 3/8 Sheet Metal Screw (1)

Install Part No. 6504-1 elbow as shown in Figure 2. If the 6484-5 duct is burned through or severely scorched, it should be replaced.

Kit No. 3

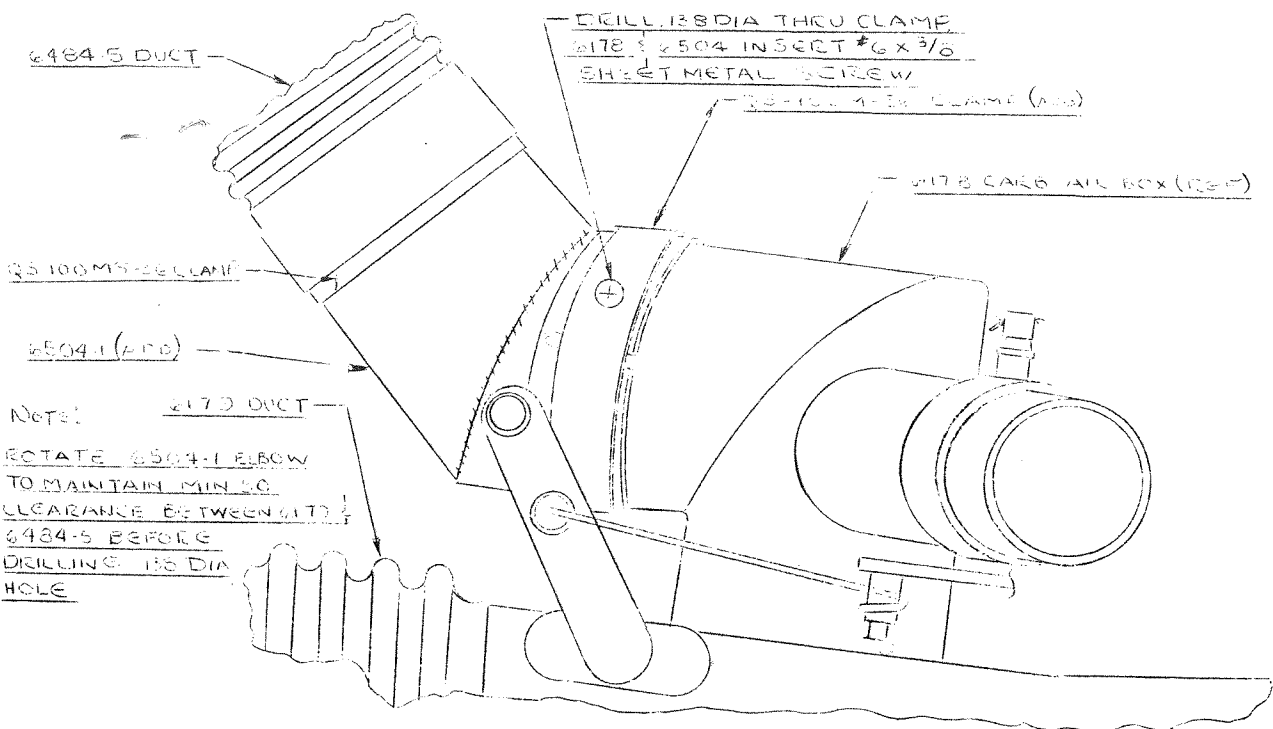
Part No. 8734-3 Lens Cap (2)

Remove lens holders on artificial horizon. Remove lamp from old lens and install the new lens (Part No. 8734) in artificial horizon in place of the old lens.

COMPLIANCE:

After completion of this Service Letter, fill out the enclosed compliance card, being sure to check the number of the kit installed, and return to Mooney Aircraft for our records.

When ordering Service Letter Kit 20-92, please include serial and registration number of your aircraft. Kits are available at no charge and may be ordered directly from our Spare Parts Department, P. O. Box 72, Kerrville, Texas.



Note:
 ROTATE 6504-1 ELBOW
 TO MAINTAIN MIN. 2.0
 CLEARANCE BETWEEN 6173 &
 6484-5 BEFORE
 DRILLING .135 DIA
 HOLE

FIGURE 2

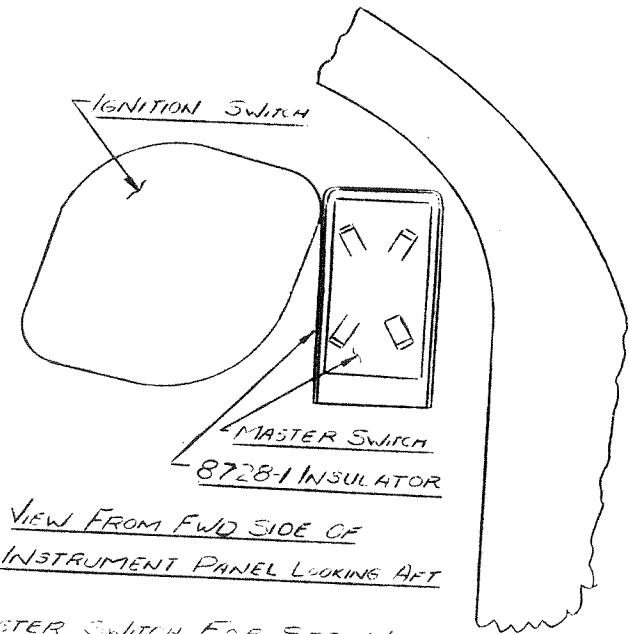
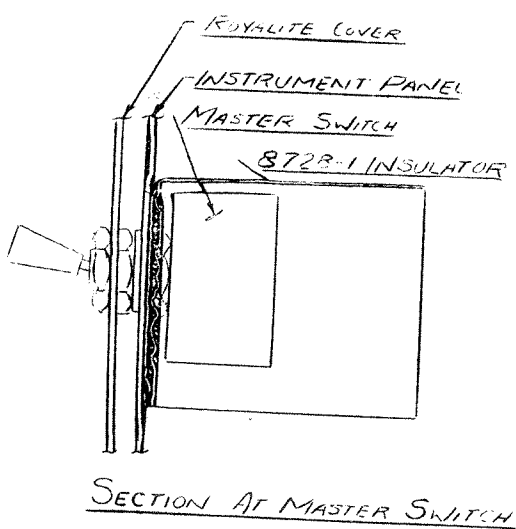


FIGURE 1 - INSULATION OF MASTER SWITCH FOR SER NO
 1852, 1940, 1941, 1943, & 1945