

MOONEY AIRCRAFT INC.
KERRVILLE, TEXAS

SERVICE LETTER 20-9
SERVICE BULLETIN M 20-9

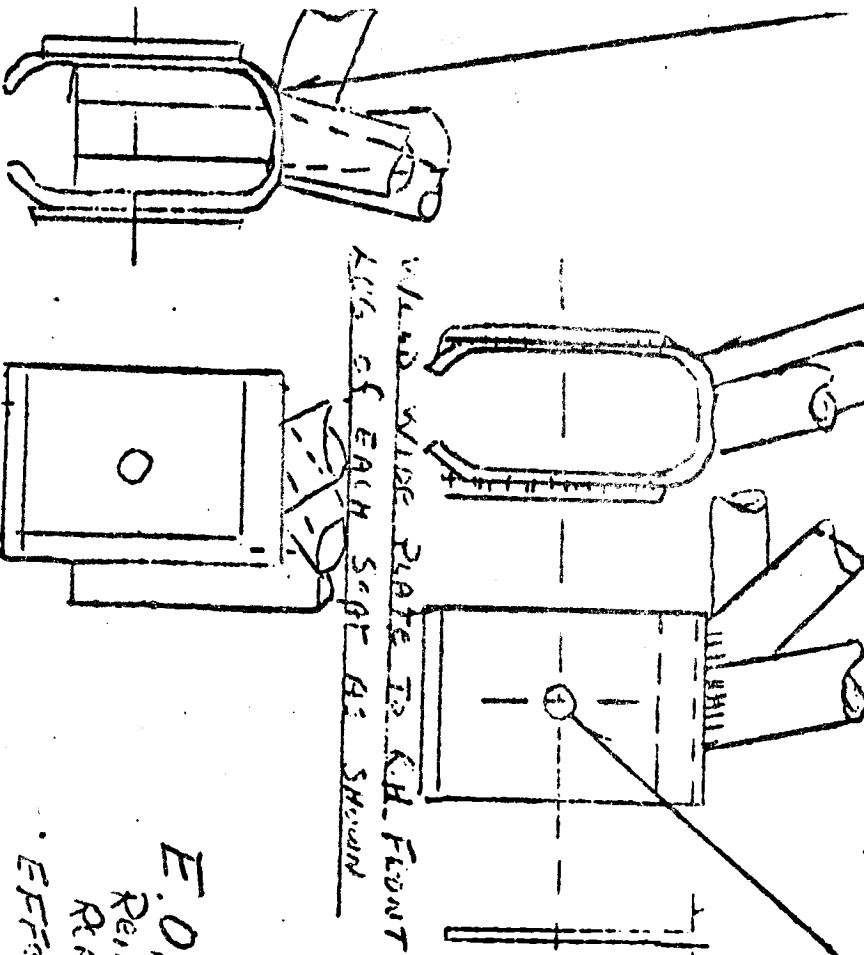
Date: 5-30-56
Subject: Kit-Seat Roller Brackets Reinforcement
Models Affected: M-20 Serial No. 1002 thru 1031
Time Of Compliance: at owners convenience
Parts List: reinforcing Plate (8)
Enclosure: ~~EO 20-9~~

There have been cases in which the pilot's seat toppled back when considerable pressure was applied to the back of the seat. This occurrence is possible when an up load spreads the forward seat roller brackets allowing them to slip off the seat rails.

It is recommended that this situation be corrected at the earliest convenient time in accordance with enclosed EO 20-9.

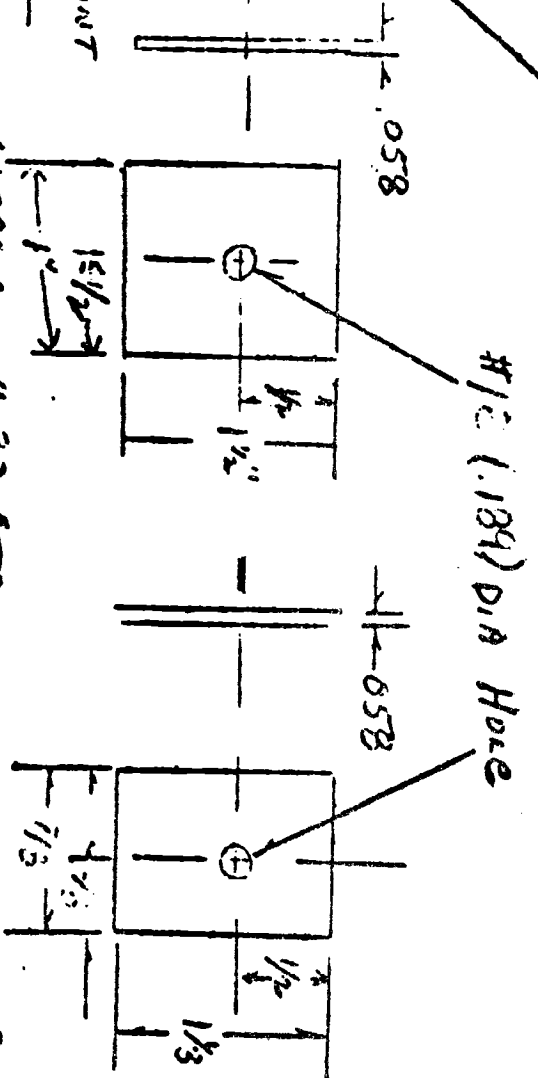
BOLT PLATES IN POSITION FOR WELDING

WELD SEAT
WIDER SET (REF)
THRU EXISTING HOLE IN 3046



WELD WIDER SET PLATE TO R.H. FRONT
LEG OF EACH SEAT AS SHOWN

WELD NARROW PLATE TO L.H. FRONT
LEGS OF EACH SEAT AS SHOWN.



MATERIAL 4130 STEEL

MATERIAL 4130 STEEL

4 Required

4 Required

E.O. 20-9. DRAWING # 3045
REINFORCEMENT OF SEAT ROLLER BRACKETS
REASON FRONT BRACKETS SPREADING AT BOTTOM
EFFECTIVE PT. IN PRODUCTION SER. NO. 1052 FOW

See serial letter 20-9.

NOTE:

- 1) WELD REINFORCING PLATES TO FRONT TWO BRACKETS ONLY ON EACH SEAT.
- 2) OMIT WASHERS WHEN REPLACING ROLLERS.

20-9
2
20-22