



SUBJECT: INSPECTION OF ENGINE GROUND WIRE

MODELS AFFECTED: All Mooney M-20 Series Aircraft thru:

M-20	S/N	1200
M-20A	S/N	1700
M-20B	S/N	1923
M-20C	S/N	690008
M-20D	S/N	260
M-20E	S/N	690017
M-20F	S/N	690019
M-20G	S/N	690004

TIME OF COMPLIANCE: MANDATORY Compliance within the next 10 operating hours and each subsequent annual or 100 hour inspection - whichever comes first.

INTRODUCTION: Inspection of the engine ground wire is often a neglected item. An adequate engine to ground connection assures obtaining best operating efficiency of generator or alternator and starter.

INSTRUCTION: INSPECT ENGINE GROUND WIRE FOR CONDITION AND SECURITY OF ATTACHMENT.

The following are acceptable methods of attaching the engine ground wire to the R.H. footwell on the firewall:

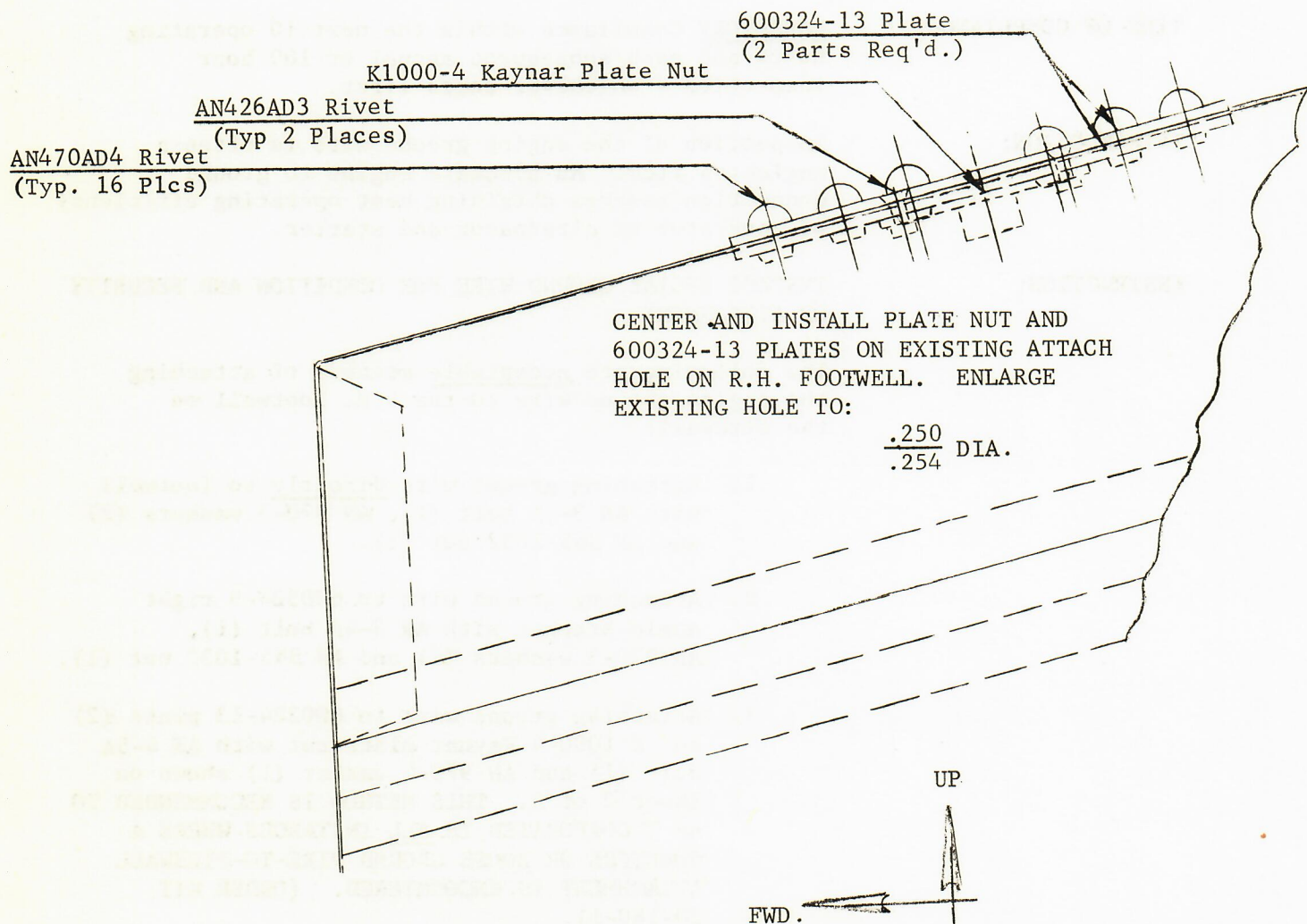
1. Attaching ground wire directly to footwell with AN 3-4A bolt (1), AN 970-3 washers (2) and AN 365-1032 nut (1).
2. Attaching ground wire to 600324-9 right angle bracket with AN 3-4A bolt (1), AN 970-3 washers (2) and AN 365-1032 nut (1).
3. Attaching ground wire to 600324-13 plate (2) and K 1000-4 Kaynar plate nut with AN 4-5A bolt (1) and AN 970-4 washer (1) shown on Sheet 2 of 2. THIS METHOD IS RECOMMENDED TO BE INCORPORATED IN ALL INSTANCES WHERE A DOUBTFUL OR LOOSE GROUND WIRE-TO-FIREWALL ATTACHMENT IS ENCOUNTERED. (ORDER KIT 20-180-1).

SERVICE BULLETIN KIT:

M20-180-1

AN 4-5A Bolt-----(1)
 AN 970-4 Washer-----(1)
 AN 470AD4- Rivets-----(16)
 AN 426AD3- Rivets-----(2)
 K1000-4 Kaynar Plate Nut-----(1)
 600324-13 Plate----- (2)

The above bulletin kit may be procured from your local Mooney distributor and service center. Direct factory orders will not be accepted.



View Looking
 Outbd. on R.H.
 Footwell on
 Firewall